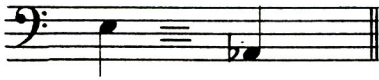


譜例19

頭目的歌 (pinvagi)

張阿田 唱
林清財 錄音
記譜

♩ = 88



記音 實音



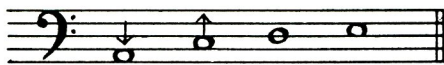
wa ge e takawan la hoisu la la be yon wo ge e ka



sai anmamomumasailaa lai wage e ka o watulo waitakan



wage e no waibuzi suawailai wage e ka ma balamo ta te kai



附記：頭目才可講 Pinvagi（大家牽手歌舞之意）。餘衆可附和頭目講的話（唱 penhagi）但不可唱 pinvagi。